

SAM OLYMPIC SCULPTURE PARK POCKET BEACH

PROJECT OVERVIEW

The Seattle Art Museum has enhanced the Elliott Bay waterfront for people and wildlife by creating a pocket beach and subtidal habitat bench at the Olympic Sculpture Park. Riprap rock was relocated, stabilizing the weakening seawall and providing public access to the water. Juvenile Chinook salmon use the nearshore environment for refuge and foraging grounds as they migrate through the Green/Duwamish River estuary.

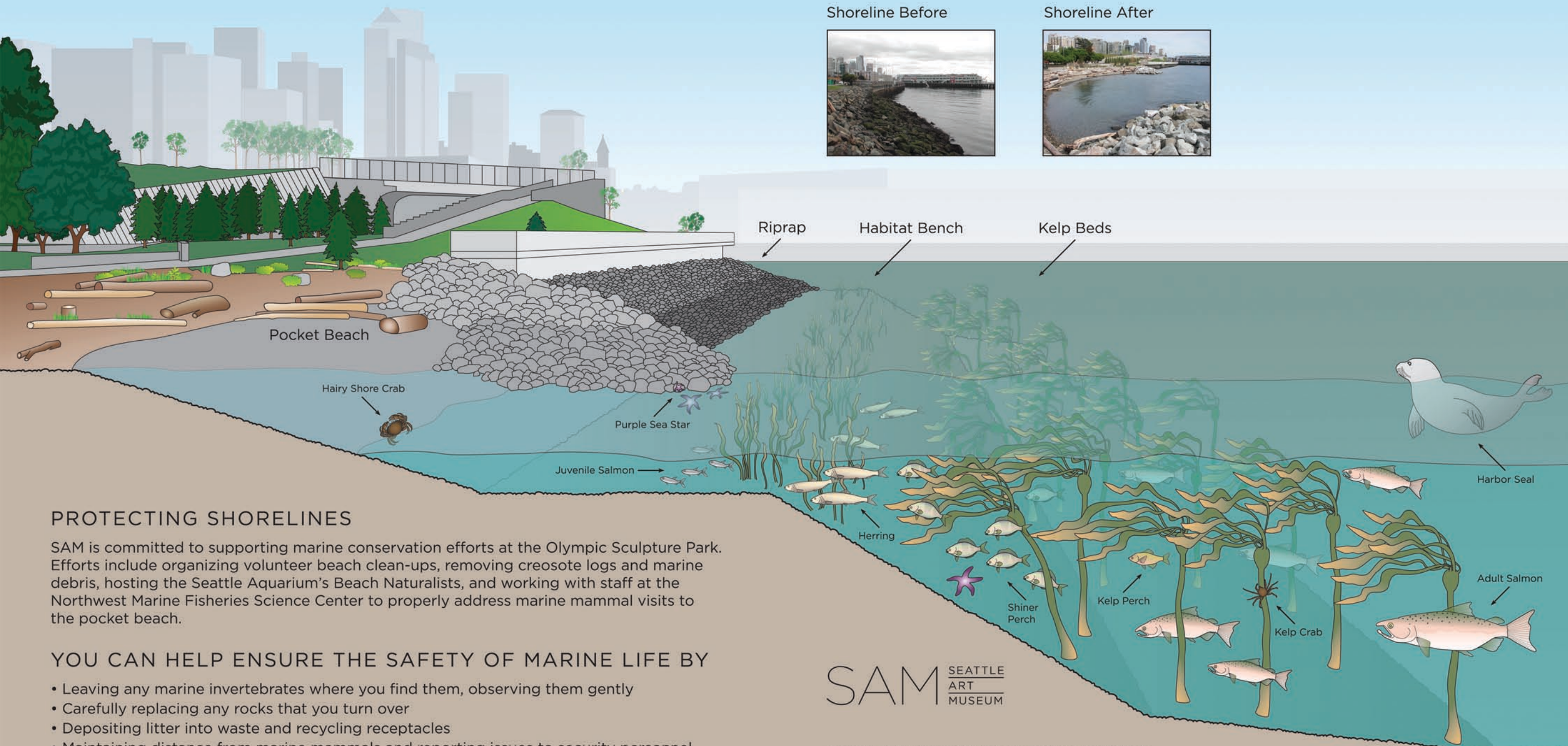
SCIENTIFIC RESEARCH

SAM has implemented a five-year beach restoration monitoring program. Research studies conducted by the Wetland Ecosystem Team at the University of Washington focus on fish, invertebrates, riparian vegetation and submerged aquatic vegetation surveys, as well as physical beach profiling. Results of 2005 and 2007 monitoring of the shoreline enhancements indicate that there has been rapid development of aquatic and terrestrial plants and animals.

Shoreline Before



Shoreline After



PROTECTING SHORELINES

SAM is committed to supporting marine conservation efforts at the Olympic Sculpture Park. Efforts include organizing volunteer beach clean-ups, removing creosote logs and marine debris, hosting the Seattle Aquarium's Beach Naturalists, and working with staff at the Northwest Marine Fisheries Science Center to properly address marine mammal visits to the pocket beach.

YOU CAN HELP ENSURE THE SAFETY OF MARINE LIFE BY

- Leaving any marine invertebrates where you find them, observing them gently
- Carefully replacing any rocks that you turn over
- Depositing litter into waste and recycling receptacles
- Maintaining distance from marine mammals and reporting issues to security personnel

SAM SEATTLE ART MUSEUM

SHORELINE DEVELOPMENT, RESEARCH AND OUTREACH SUPPORTED BY:

